

ATLANT Renewables

ATLANT Projects

ATLANT Waterproofing

ATLANT Construction

ATLANT Living

ATLANT Joinery

ATLANT

www.atlantconstruction.com

ATLANT is a group of companies working in the high end residential construction sector.

Ranging from refurbishment, extensions, basements to new build houses for private clients. We work closely with architects and designers to create the spaces that they visualise, understanding that great design can only be realised if it is executed properly.

Our collaborative approach to construction and management allows us to deliver a range of unique projects to a high standard.





ELSYNGE ROAD SW18

Construction of 2 new-build houses on the site of an existing semi-detached bungalow block.

The backland site was only accessible through a 1m wide alleyway for all materials and machinery. Therefore the entire GluLam timber structure was fabricated and assembled by hand on site in small sections.

The envelope is clad with a breathable / weather resistant membrane and finished with bespoke profiled timber battens.





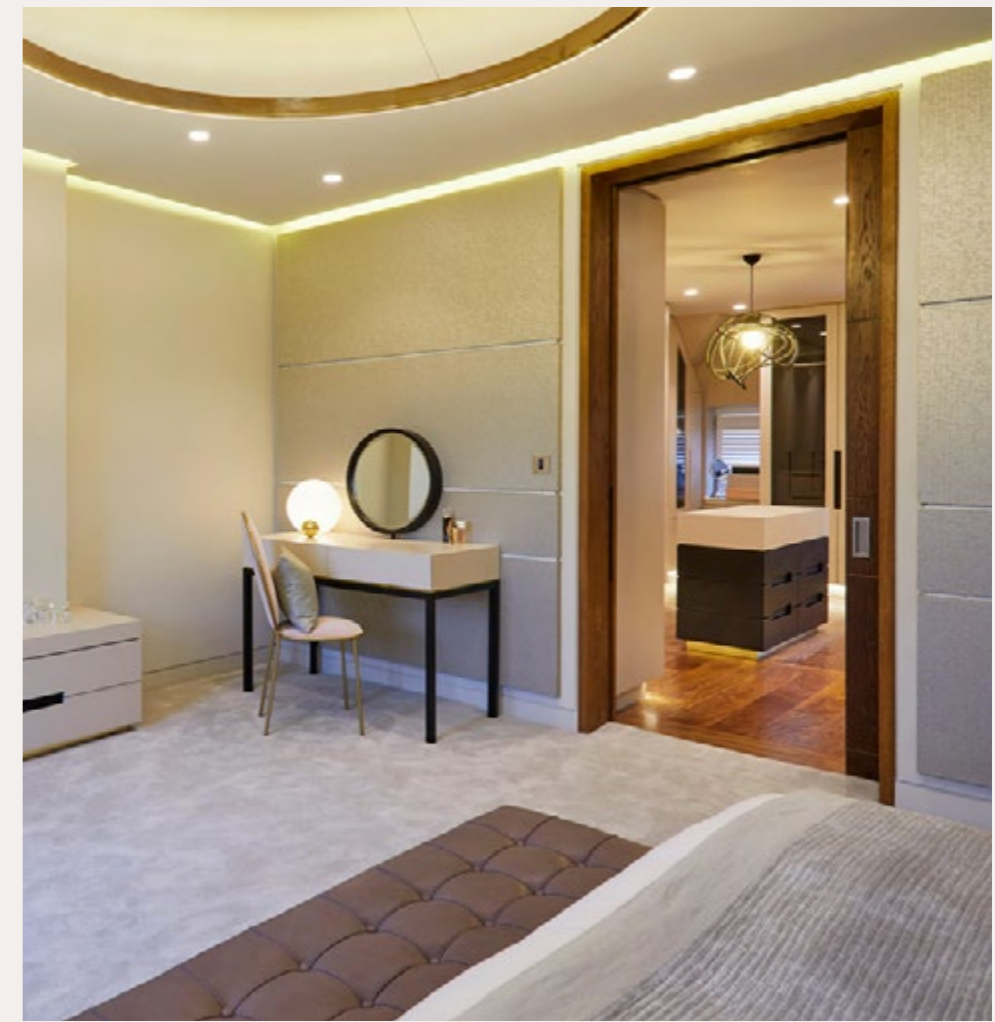


**LYFORD ROAD
SW18**

Full refurbishment and extension of a large detached house including a new 140sqm basement and outdoor swimming pool.

ATLANT provided full building services from basement retaining walls, steel structure, finishes and fittings.

The project involved liaising with a number of specialists including interior designers, joiners, swimming pool specialists, landscape designers and intelligent lighting contractors.







**LOVELACE ROAD
KT6**

Construction of a new-build house in Surbiton with clever brick detailing and a hidden gutter to create a slightly industrial feel.

A double-height space to the rear, lets light into the large open-plan living / dining / kitchen area.

ATLANT provided full building services from foundations through to finishes and external hard landscaping.







**DULWICH WOOD AVENUE
SE19**

Working in collaboration with 31/44 Architects, ATLANT provided full construction services to build a new detached house on a tight garden site.

The project involved an in-situ concrete frame, complex brickwork and a full fit-out including bespoke joinery.

Through careful management and coordination we were able to bring the architects vision to life and create a unique dwelling.





29A



**ASHWORTH ROAD
W9**

A contemporary extension and complete refurbishment of a detached house in Maida Vale.

The large extension is supported by piled foundations and the open plan space is formed with a complex steel arrangement.

In addition to construction and structural work ATLANT provided a full fit out services including all electrical, plumbing, joinery, tiling and procuring specialist items such as the resin floor finish.





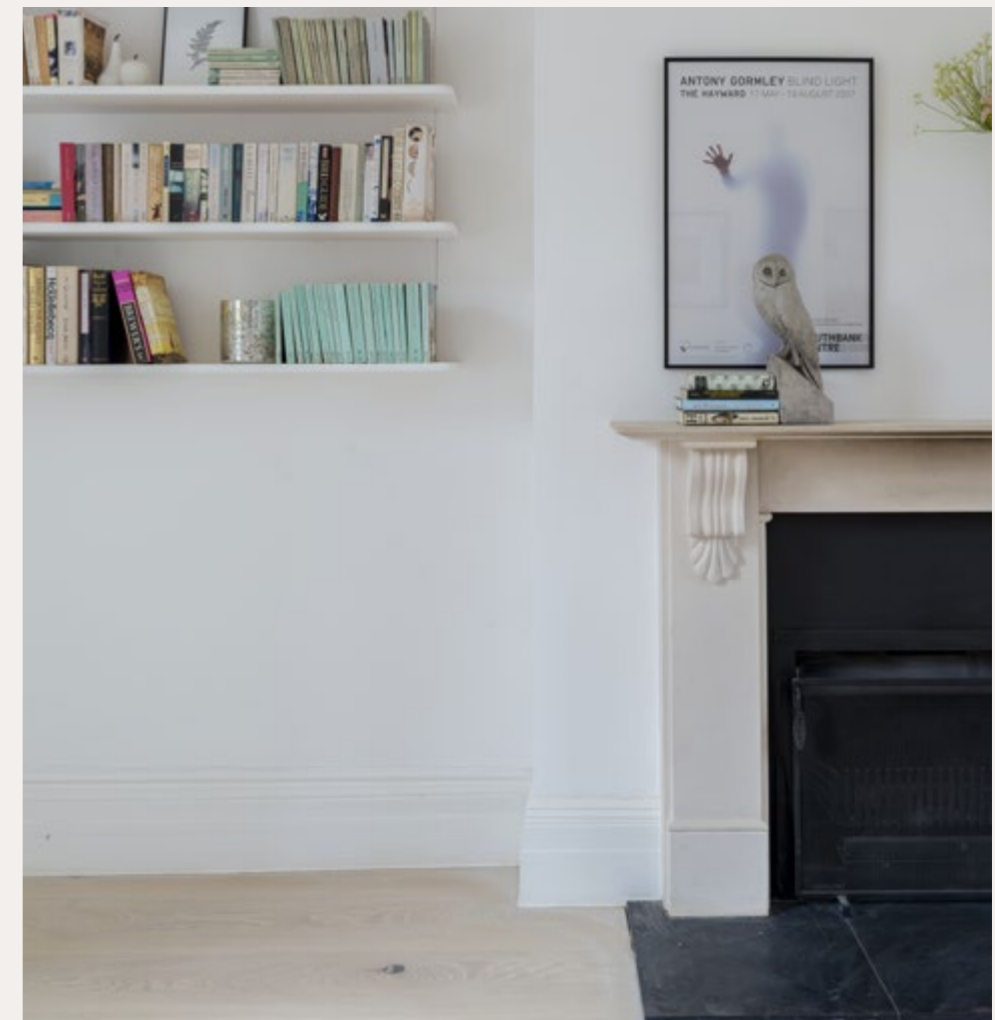


GROVEWAY SW9

An extension and full refurbishment to a four storey Grade II Listed Building including lowering the floor level of the existing basement.

In addition to construction and structural work ATLANT provided a full fit out services including bespoke joinery, decorative plaster and a marble slab bathroom.

The result is a beautiful family home with light and airy spaces for modern living whilst respecting the historic building.







**UPPER BROCKLEY ROAD
SE23**

Full refurbishment of a 4 storey Victorian terrace house in South London.

The works included a new basement, extension with corten cladding and significant structural alterations, through to fit-out and finishing

The Ground Floor has a split level leading between dining and kitchen, which is flooded with light from a large single pane of sloping glass.



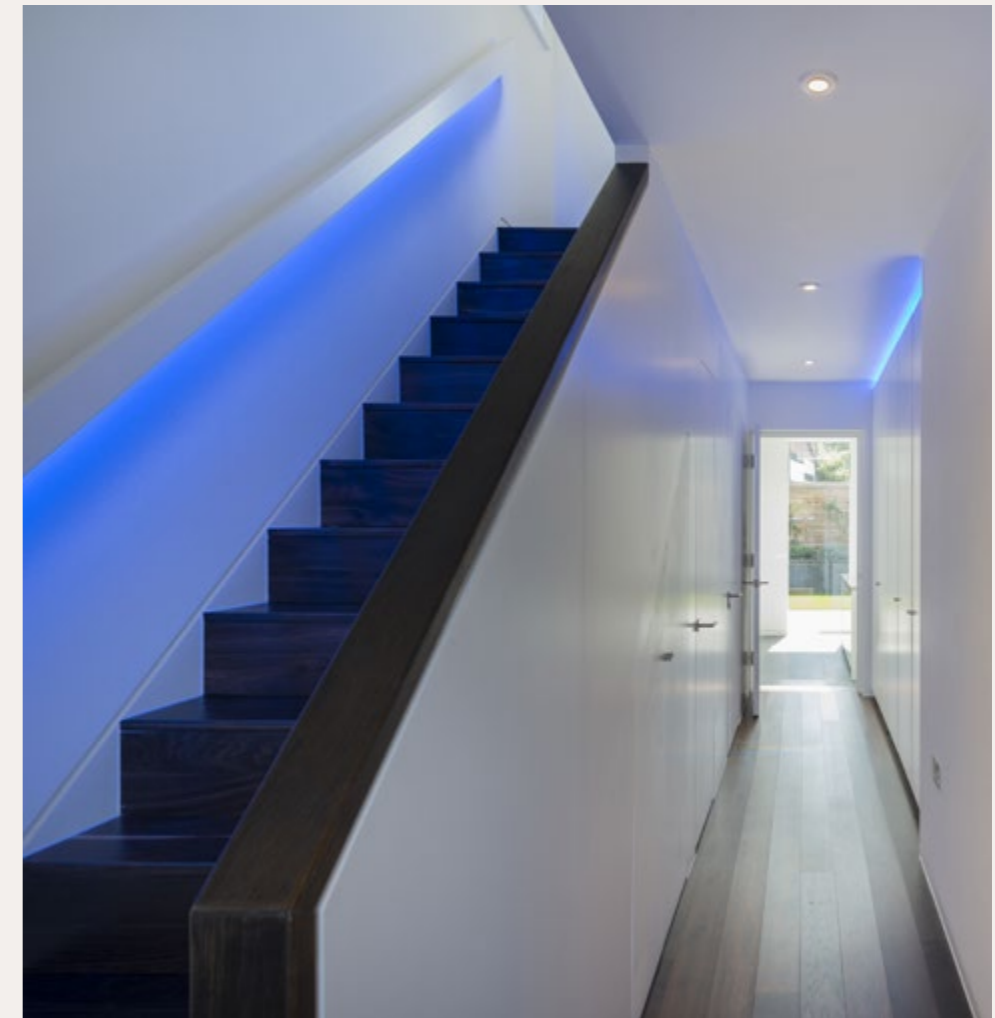




ST JAMES'S CLOSE SW17

Construction of a 4 storey New Build house including basement along with the extension and refurbishment of 2 neighbouring properties to create a modern terrace of 3 dwellings.

The project involved full construction and fit-out services along with a number of bespoke metalwork items including aluminium clad bay and dormer windows, along with an insulated render system.







QUAKER'S HALL LANE TN13

A modern ground floor extension to the rear of a cottage in Sevenoaks, Kent. Including a full refurbishment and modernisation throughout. The extension is clad with Bronze panels and burnt larch, the flat roof is finished with sedum.

The project also involved a two storey side extension along with the creation of a basement.

A void space was created in the middle of the cottage with a bespoke staircase leading to the bedrooms and bathrooms on the first floor.







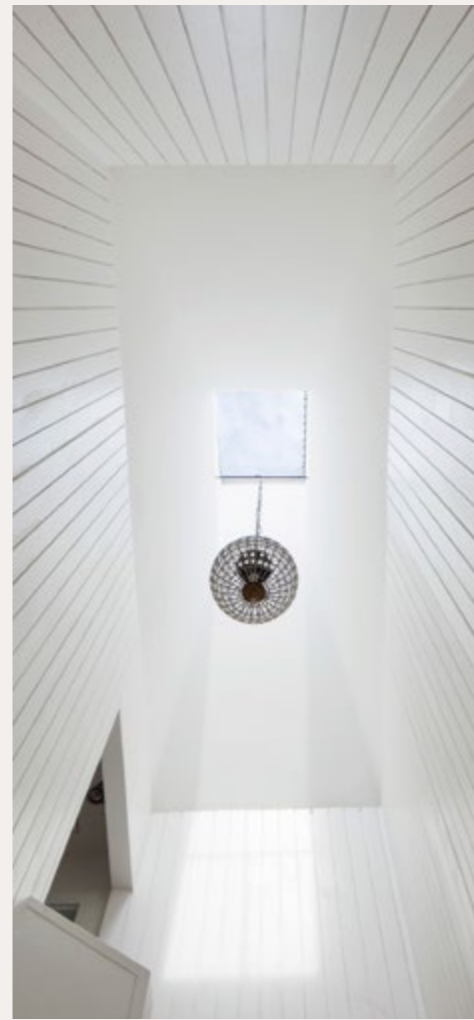
**DORSET ROAD
N22**

A new build house at the end of a terrace of Victorian railway cottages.

Constructed from reclaimed bricks the external envelope follows the proportions and details of the neighbouring terrace. In contrast the internal spaces are modern and bright.

Bespoke carpentry and joinery items feature throughout the house including a reclaimed oak beam, exposed joists and a timber clad stairwell with skylight above.







NEWBERRIES AVENUE
WD7

Construction of a new 3 storey house in Radlett.

A traditional build with modern interior spaces and large areas of glass leading to a terraced garden.

ATLANT provided full building services from demolition of the existing dwelling through to finishes and coordination of specialist sub-contractors

The result is large family home with 5 Bedrooms, 5 Bathrooms, a Gym and Cinema Room.





TO BE CONTINUED...